



Overview

The KD1 unit is available in 3 sizes. All are equipped with one bi-polar Bentax® ionization tube.

Variants of electrical connection as well as an option with built-in fan for improved distribution of ions to the natural convection of ambient room-air.

Note: The fan is not intended as Room-Air-Ventilator.

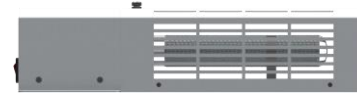
The KD1 Units are intended to be mounted on walls or ceilings and allow an easy maintenance access to the Ionization-tube.

Applications are pollutants degradation, air refreshment, air disinfection and odor elimination for Industrial, commercial and home use.

Food, chemicals, pharmaceuticals, agriculture, paints and varnishes, solvents, medicine, hospitals and many more.

Base Systems: KD1[x]-yz

D



E



F



Power Connection: KD1x-|y|z



EB

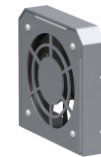
C14 power-socket (IEC 60320-1) with illuminated switch, fuse-box and a C13 power-cord (country specific)

Fan Option : KD1x-y|z



N

without
Fan



V

Installed Fan

Specifications

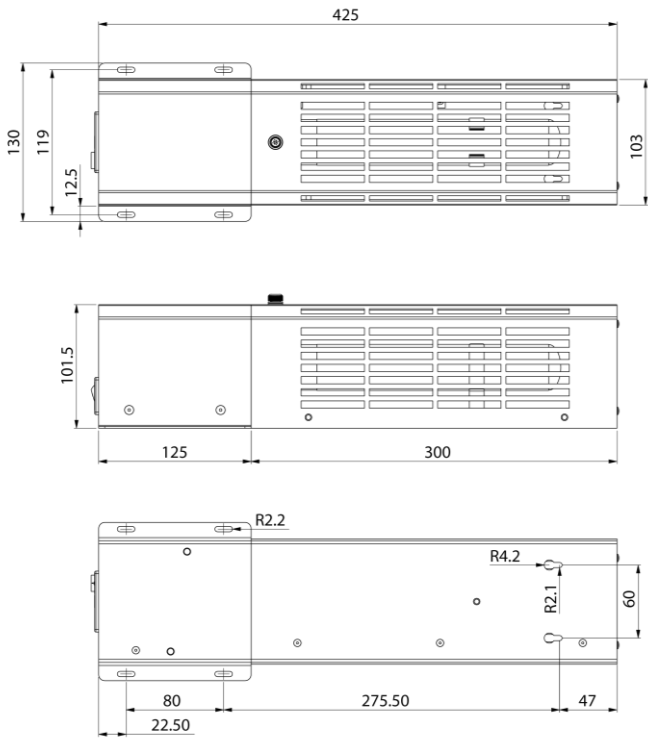
	KD1D	KD1E	KD1F
Voltage	230 VAC ± 10% 50Hz 115 VAC ± 10% 60Hz		
Power Consumption (...) with Fan	2.6 W (18.1 W)	3.2 W (18.7 W)	5.2 W (20.7 W)
Room-Volume *	~ 120 m ³	~ 160 m ³	~ 250 m ³
Weight (...) with Fan	1.6 kg (1.8 kg)	1.8 kg (2.0 kg)	2.0 kg (2.2 kg)

* Depending on: Air Quality, VOC, VVOC, Air Change Rate

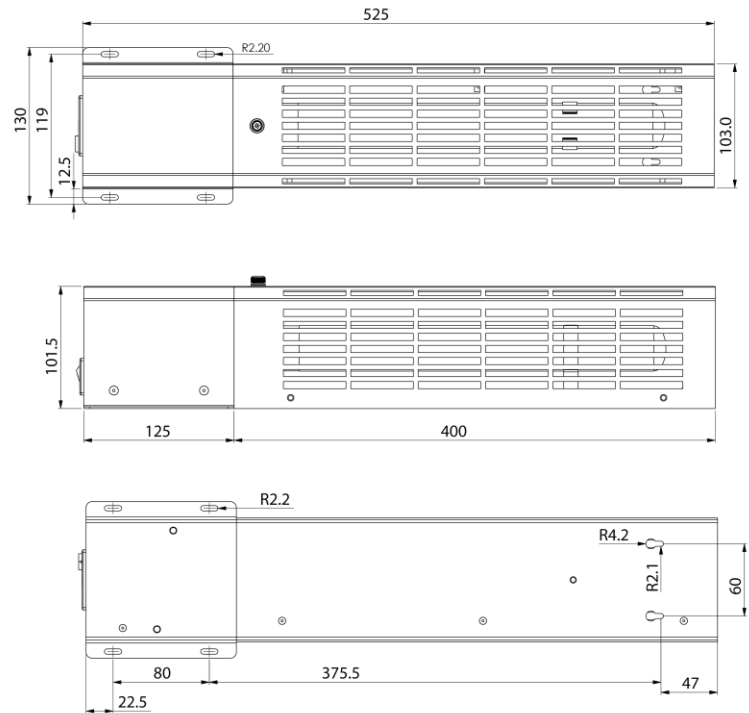
Order Numbers KK1 System

	Voltage	Order #
KD1D-EBN	230	KD-01-D1-A1
	115	KD-01-D2-A1
KD1D-EBV	230	KD-01-D1-A2
	115	KD-01-D2-A2
KD1E- EBN	230	KD-01-E1-A1
	115	KD-01-E2-A1
KD1E- EBV	230	KD-01-E1-A2
	115	KD-01-E2-A2
KD1F- EBN	230	KD-01-F1-A1
	115	KD-01-F2-A1
KD1F- EBV	230	KD-01-F1-A2
	115	KD-01-F2-A2

Dimensions KD1D (mm)



Dimensions KD1E (mm)



Dimensions KD1F (mm)

